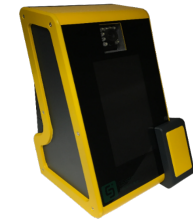




CiSystem  
Solutions 建維

# CiSystem Solutions Introduction

*Construction x Digital = Values Creation, Win-Win Situation*



PTAH



## Abstract

**The experience of building a technology start-up, and the patent application process we went through**

**By Henry Pau**

# Success Case – Main Contractor

PTAH has been running successfully in a building construction site in Central. With this success, we can replicate it to other main contractors.



**Project:** AA163 - No. 45-47 Pottinger Street, Central, Hong Kong

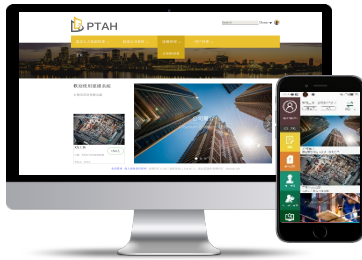
<b>Duration</b> 3 years	<b>Worker No.</b> 100-400	<b>Complexity</b> High
----------------------------	------------------------------	---------------------------

### Benefits

- 
**Real Time Visibility**  
 Immediate know if sufficient workers to ensure the progress
- 
**Subcon Management**  
 Easy to know the no. of workers and their trade from each subcon
- 
**Efficiency**  
 Much faster than write on the attendance book
- 
**Clear Evidence**  
 Less argument on the attendance accuracy of the workers
- 
**Accurate Data for Reporting**  
 Provide all attendance with picture as supporting for payment

## Real-time data for Management

- Review worker attendance records in real-time on mobile or desktop
- A.I. powered outdoor facial recognition



## Simple and Reliable for site admin

- IP55 industrial grade weather proof
- Plug-n-play deployment
- Built-in 3G/4G connectivity
- Support offline mode
- Allow remote monitoring



©2018 CiSystem Solutions Company Limited. All rights reserved.

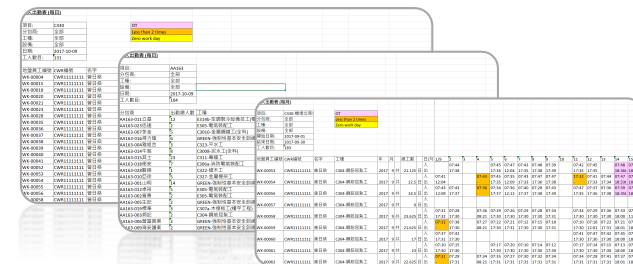
## CIC's CWRS, DWDS compliance

- CIC listed integrator
- Built-in CWRS
- Enable for DWDS
- Support CIC Workers Registration Cards or Mifare Cards

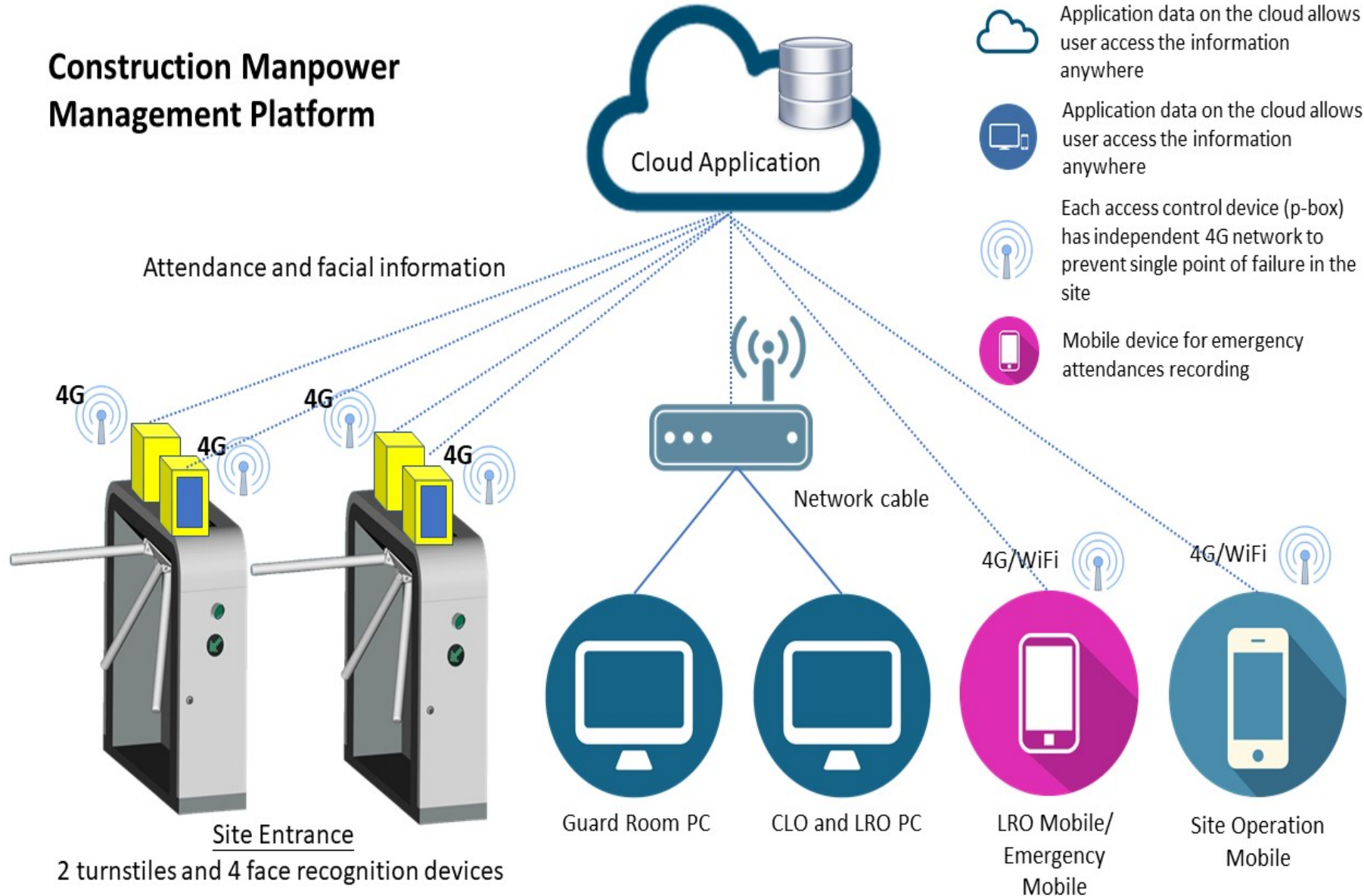


## Analysis report for back office

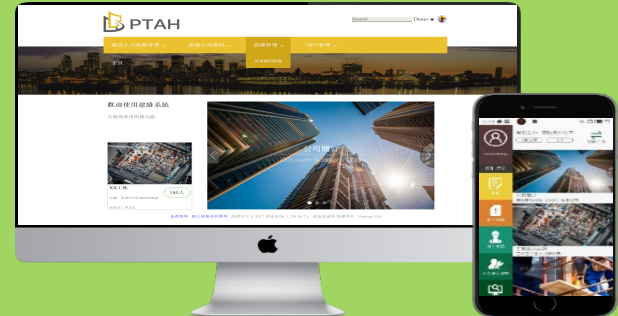
- Daily and monthly report by trade
- Easy export to Excel
- Attendance records supported by photos



# Construction Manpower Management Platform



## PBox



## Who We Are

We are a pioneer technology company to leverage the emerging technologies to create innovative solutions to construction industry.

# 01

### Focus on Construction Industry

We have clear vision to create innovative solutions for construction industry and we have good understanding on the industry needs based on our experience and the valuable feedback from the industry stakeholders.

# 02

### Proven Capability to Create Innovative Product

We used a combination of new technologies such as outdoor facial recognition, AI deep learning, IoT and cloud computing to create an innovative product - PTAH which is not found in the market to resolve the classic issues in construction industry on managing the workers' attendance.

# 03

### Dedicated Professional Digital Team

We have a dedicated professional digital team which is a mix of experts on IoT hardware, AI software, cloud computing, mobile solutions, Accounting and Finance, Sales and Marketing. We also able to access a pool of excellent engineers in ShenZhen

# Success Case – Subcontractor

PTAH has been running successfully in an airport site.

With this success, the client is confirmed to deploy the P-Boxes to other sites



**Project:** P561 - North Commercial District Enabling Works

**Duration**  
1.5 years

**Worker No.**  
80-250

**Complexity**  
High

### Benefits



Management

#### Real Time Visibility

Immediate know if sufficient workers to ensure the progress



Worker Head

#### Resources and Work Planning

Easier to allocate resources to fulfil the planned work tasks



Worker

#### Work Proof

Evidence to prove the attendance for work



Site Admin

#### Ease of Use

Less admin effort given it is plug and play and no IT required



HR

#### Accurate Data for Reporting

Provide all attendance with picture & the reports to calculate the payroll

# Benefits to Workers

- Easy to use
- Reliable



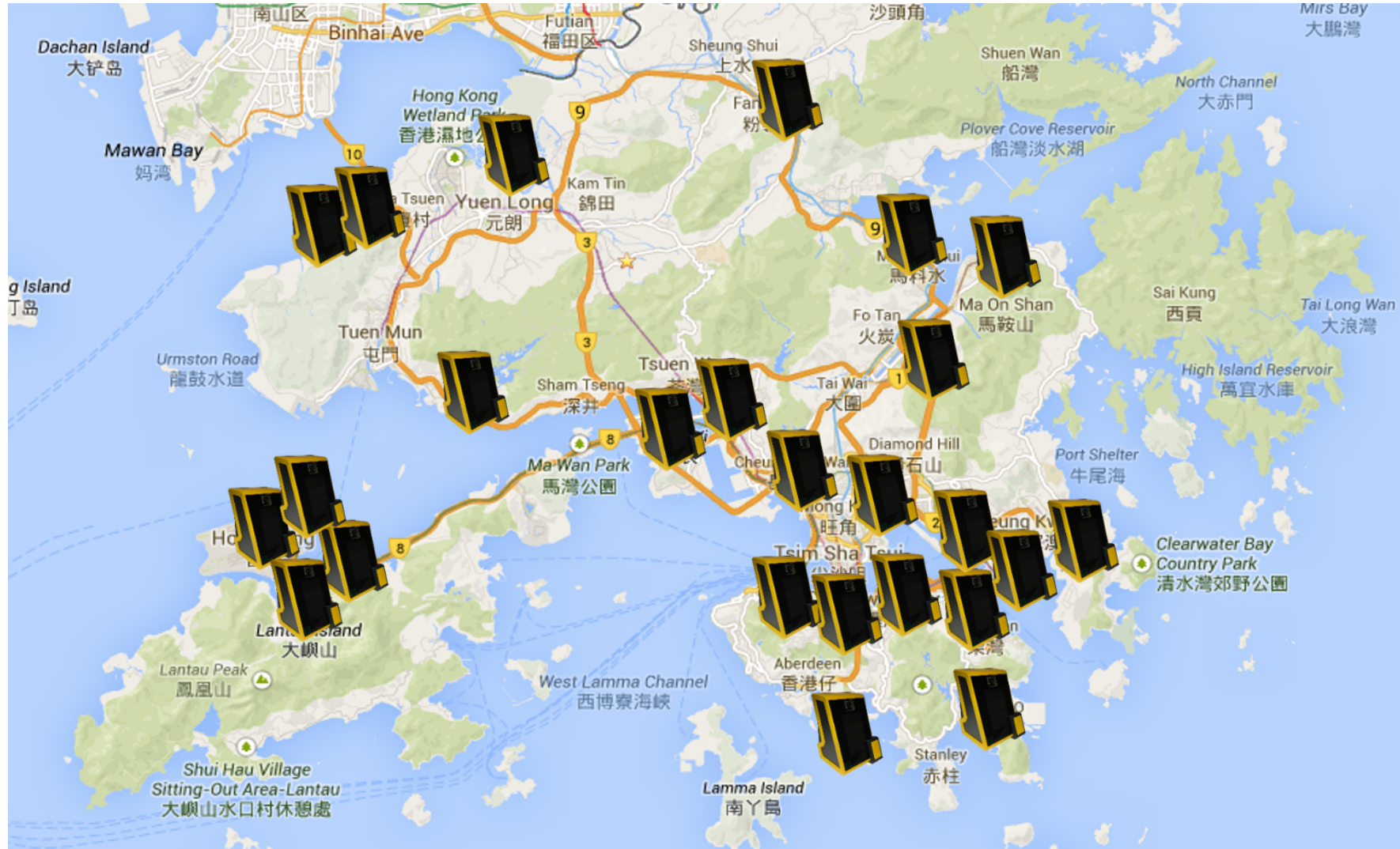
## Success Case – Top Ten Main Contactor

Since facial recognition technology is almost the best biometric access control in construction area, P-Box integrates turnstile become an intelligent entrance control solution.



# PTAH-Boxes in Hong Kong

This is a summary of geographical coverage of current P-Box deployment, with both main contractors and sub-contractors



# Our Innovation

This is a tailored solution to meet different stakeholders' expectations

- Worker *wants* **Ease of use system**
- Admin *wants* **Minimal maintenance effort**
- Safety Officer *wants* **Reliable worker attendance records for emergency evacuation**
- Management *wants* **Data visibility and Financial flexibility**

## Adoption

- Plug and Play
- User friendly interface
- No IT support required

## Flexible

- Monthly rental
- Tied with project duration

## Mobile

- Simple registration
- Check records anytime anywhere



## Compliance

- Built in CWRS
- CIC recognised

## Reliable

- Dust protection
- Water proof
- Facial recognition (touch free)
- Remote monitoring

## Visibility

- Role based security
- Real time, accurate data
- One click reporting



# Our Core Competence

There are 6 major core competences to enable us to be a successful one in the market.

